

SEATING FABRIC OPTIONS

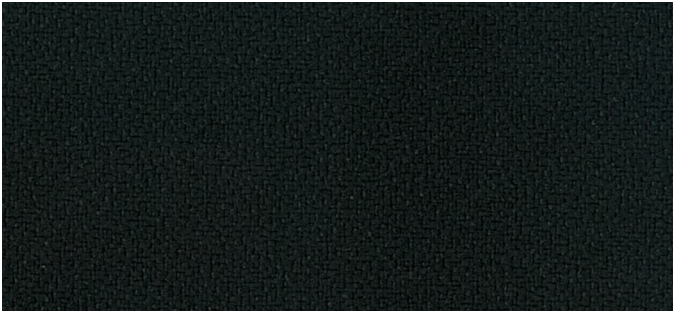
CALPIA
Quality Products ★ Changed Lives ★ A Safer California

BRING THE COLORS AND TEXTURES OF NATURE INDOOR





SOLIDS



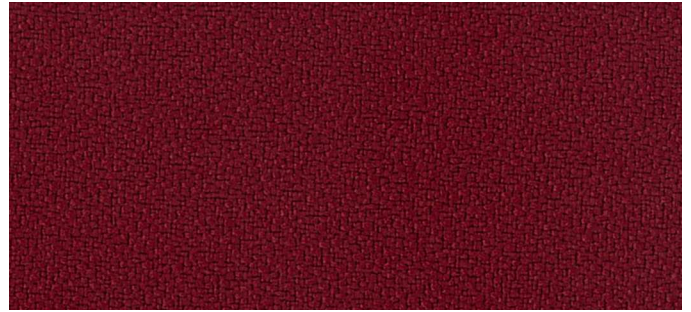
EBONY



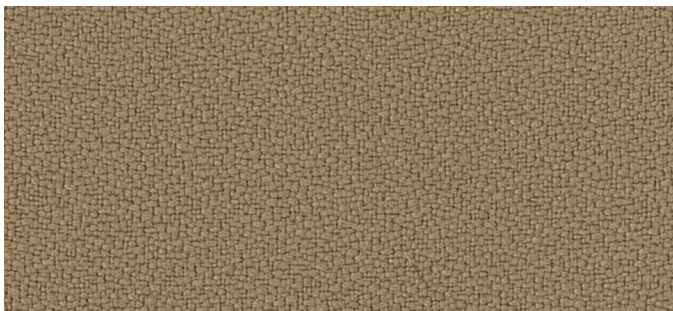
SAPPHIRE



GRAPHITE



FLAME



BUCKSKIN



BASIL

COLORS MAY VARY, PLEASE CONTACT YOUR SALES REPRESENTATIVE OR CALL 916.323.2419 TO ORDER FABRIC SWATCHES.

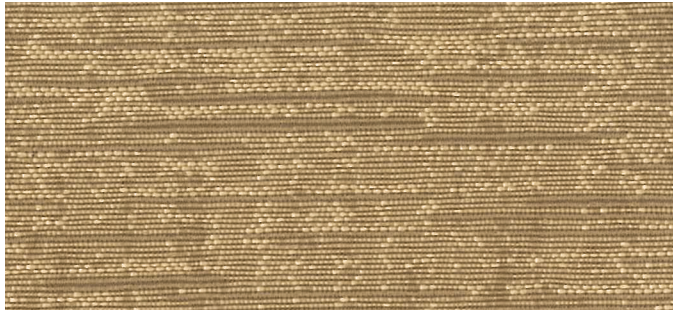
PATTERN



SHADOW



LAPIS



PARCHMENT

CRYPTON



JET



TAUPE



HEIRLOOM



SHIRE

FABRIC SPECIFICATIONS

FABRIC SPECIFICATION	MAYER FABRICS FOUNDATION 10 SOLID	MAYER FABRICS SHANTUNG PATTERN	MOMENTUM TEXTILES COVERCLOTH CRYPTON®
TECHNICAL INFO.			
Content	100% Post Industrial Recycled Polyester	100% Recycled Polyester (65% pre / 35 % post consumer)	56% post consumer recycled polyester, 44% polyester
Backing	None	Polyester	None
Finish	Stain Repellent	None	*Crypton Green®
CLEANING INFO.			
Spot Clean	**WS = Water/ Solvent	**WS = Water/ Solvent	W; Bleach Cleanable (10:1)
PERFORMANCE			
Surface Abrasion (Double Rubs)	Exceeds 1,000,000 DR	51,000 DR	200,000 DR
Crocking dry/wet (AATCC-8)	Class 4/Class 4	Class 4/Class 4	Class 4.5/Class 4.5
Light (AATCC-16)	Class 4 40 hours	Class 4 40 hours	Class 4 40 hours
FLAMMABILITY			
TB 117 Sec E (Class1-pass)	Passes	Passes	Passes
NFPA 260 (UFAC)-Class 1	Passes	Passes	Passes
SUSTAINABILITY			
Greengaurd Gold Certified	Yes	Yes	Yes

*Crypton® is moisture, stain, odor, fungus, mildew bacteria resistant. Crypton®'s moisture barrier is integrated into the fabric, ensuring permanent protection. Crypton® is the first and only fabric approved by the EPA and proven to be able to be disinfected.

CLEANING INFORMATION:

** WS: Water/Solvent Cleaner - Spot clean with a mild solvent, an upholstery shampoo, or the foam from a mild detergent. When using a solvent or dry cleaning product, follow instructions carefully and clean only in a well-ventilated room. Avoid any product that contains carbon tetrachloride or other toxic materials. With either method, pretest a small area before proceeding. Always rinse promptly with clean water. Cleaning by a professional furniture cleaning service is recommended. To prevent overall soil, frequent vacuuming or light brushing to remove dust and grime is suggested.

FOR MORE INFORMATION VISIT OUR ONLINE CATALOG AT CALPIA.CA.GOV OR SALES AT 916.323.2419



- CUSTOMER SUPPORT
- REPORT A PROBLEM
- CUSTOMER FEEDBACK
- EXEMPTION REQUEST

calpia.ca.gov



California Prison Industry Authority • 560 East Natoma Street, Folsom, CA 95630-2200 • 916.358.2733 • calpia.ca.gov