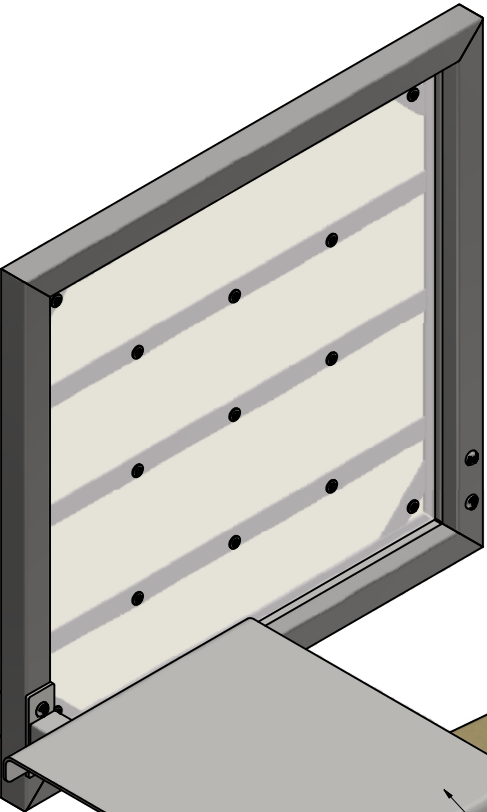


STANDARD DESK & SIDE SCREEN: 797102.2000

STANDARD DESK: 797102.1000  
SIDE SCREEN: 797200.1000

REVISION HISTORY		
REV	EWR #	DATE
A	002187	3/10/2020

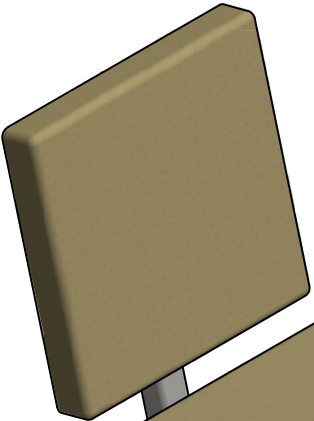


TEAR RESISTANT VINYL COVERED SEATS.  
(REPLACEMENT PART 797300.1000)

22" WIDE X 19" WORK SURFACE

CONTINUOUS STEEL WELDS  
PRECLUDE CONTRABAND CONCEALMENT

LEFT-SIDE SCREEN MOUNT



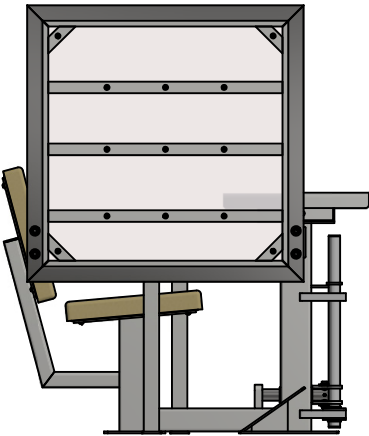
PROTECTIVE SAFETY SCREEN CAN BE MOUNTED  
ON LEFT OR RIGHT SIDE.  
NO ADDITIONAL HARDWARE REQUIRED TO REPOSITION.

1/4" CLEAR POLYCARBONATE ALLOWS  
CORRECTIONAL STAFF PROXIMITY  
WITH MAXIMUM SITUATIONAL AWARENESS.  
(REPLACEMENT PART 797201.1000)

DURABLE LIGHT-GRAY  
POWDER COAT FINISH

7/16" DIAMETER FLOOR MOUNTING HOLES ,  
FOR USE WITH 3/8" ANCHOR BOLTS, 8 EACH.

RIGHT-SIDE SCREEN MOUNT



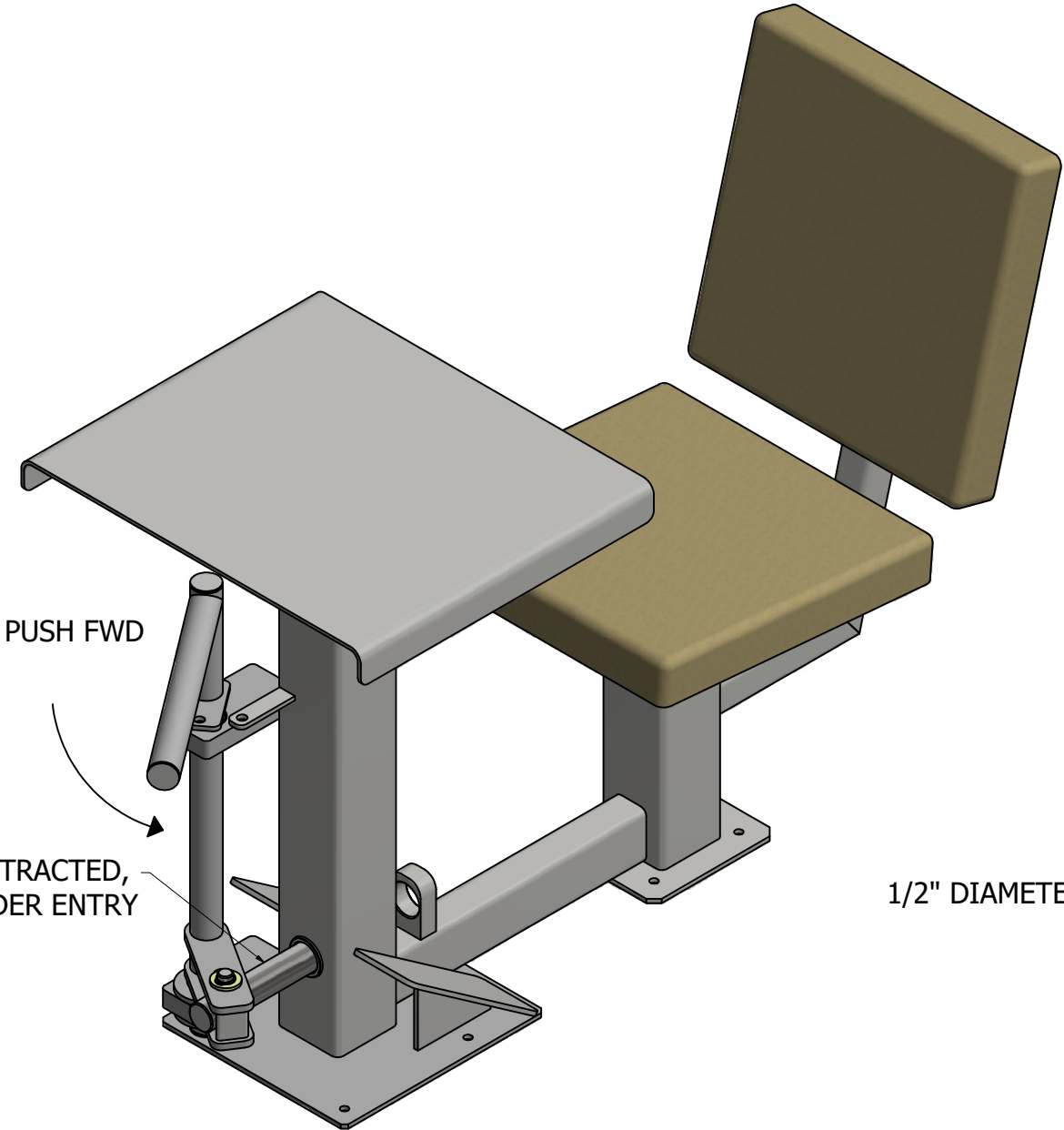
LEFT SIDE

CALPIA					
STATE OF CALIFORNIA, PRISON INDUSTRY AUTHORITY 560 EAST NATOMA STREET, FOLSOM, CALIFORNIA 95630					
PRODUCT DESCRIPTION					
CALPIA SECURITY DESKS					
ERPLx DESCRIPTION (30 CHARACTERS MAX)					
CUSTOMER INSTALLATION, OPERATION, AND INFORMATION DRAWING					
ERPLx EXTRA DESCRIPTION (30 CHARACTERS MAX)					
DRAWN BY	D.SPIVEY				
CHECKED BY	R.MARIN				
DRAWING SCALE	NOTED				
SHEET SIZE	D				
320	797102.2000	797102.2000	797102.2000	A	SHEET 1 OF 5
WEIGHT (lbs)	FINISHED GOOD #	ERPLx ITEM #	ENG DRAWING #	REV	SHEET #

NOTE: THIS DRAWING IS PROPRIETARY INFORMATION OF CALPIA AND IS NOT TO BE DISCLOSED IN PART OR AS A WHOLE WITHOUT PRIOR WRITTEN CONSENT AND PERMISSION OF CALPIA.

STANDARD DESK: 797102.1000 - OPERATION

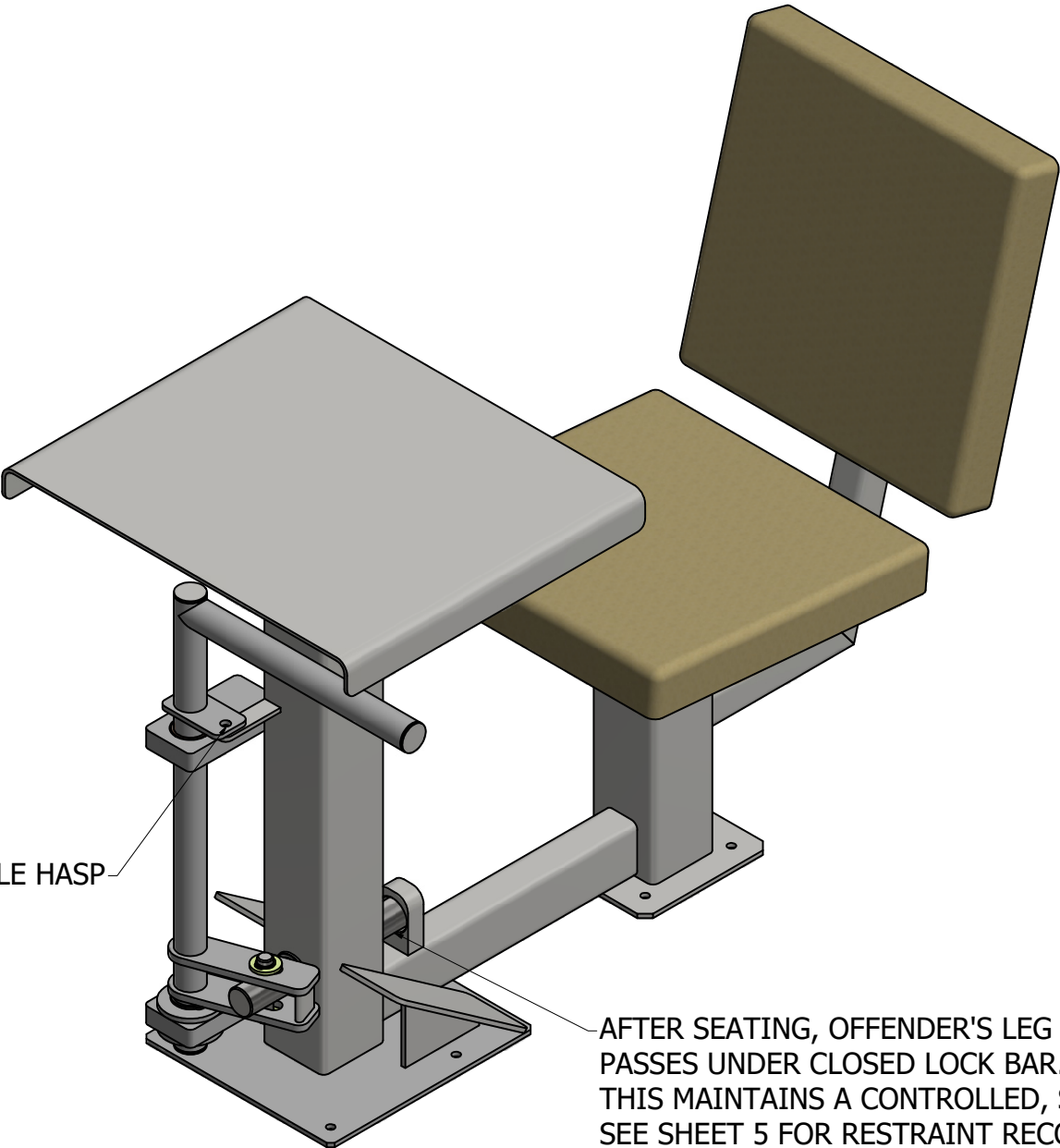
REVISION HISTORY		
REV	EWR #	DATE
A	002187	3/10/2020



PUSH FWD

LOCK BAR IS RETRACTED,  
READY FOR OFFENDER ENTRY

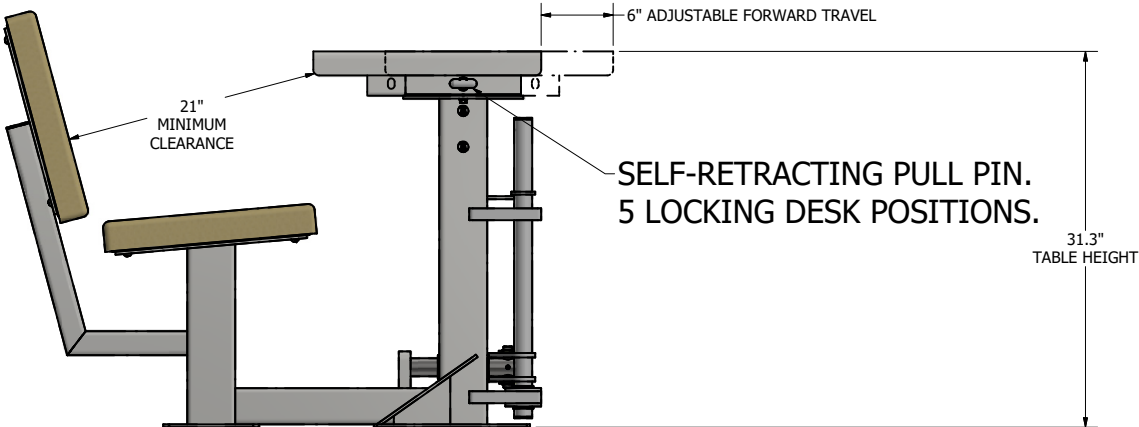
OPEN LOCK BAR POSITION



1/2" DIAMETER PADLOCKABLE HASP

AFTER SEATING, OFFENDER'S LEG RESTRAINT  
PASSES UNDER CLOSED LOCK BAR.  
THIS MAINTAINS A CONTROLLED, SEATED POSITION.  
SEE SHEET 5 FOR RESTRAINT RECOMMENDATIONS.

CLOSED LOCK BAR POSITION



21"  
MINIMUM  
CLEARANCE

SELF-RETRACTING PULL PIN.  
5 LOCKING DESK POSITIONS.

31.3"  
TABLE HEIGHT

RIGHT SIDE VIEW

CALPIA					
STATE OF CALIFORNIA, PRISON INDUSTRY AUTHORITY 560 EAST NATOMA STREET, FOLSOM, CALIFORNIA 95630					
PRODUCT DESCRIPTION					
CALPIA SECURITY DESKS					
ERPLx DESCRIPTION (30 CHARACTERS MAX)					
CUSTOMER INSTALLATION, OPERATION, AND INFORMATION DRAWING					
ERPLx EXTRA DESCRIPTION (30 CHARACTERS MAX)					
DRAWN BY	D.SPIVEY				
CHECKED BY	R.MARIN				
DRAWING SCALE	NOTED				
SHEET SIZE	D				
228	797102.1000	797102.1000	797102.1000	A	SHEET 2 OF 5
WEIGHT (lbs)	FINISHED GOOD #	ERPLx ITEM #	ENG DRAWING #	REV	SHEET #

NOTE: THIS DRAWING IS PROPRIETARY INFORMATION OF CALPIA AND IS NOT TO BE DISCLOSED IN PART OR AS A WHOLE WITHOUT PRIOR WRITTEN CONSENT AND PERMISSION OF CALPIA.

# WHEELCHAIR ACCESSIBLE DESK & SIDE SCREEN: 797103.2000

ACCESSIBLE DESK: 797103.1000  
SECURITY SCREEN: 797200.1000

REVISION HISTORY		
REV	EWR #	DATE
A	002187	3/10/2020

TEAR RESISTANT VINYL COVERED SEATS.  
(REPLACEMENT PART 797300.1000)

PROTECTIVE SAFETY SCREEN CAN BE MOUNTED  
ON LEFT OR RIGHT SIDE.  
NO ADDITIONAL HARDWARE REQUIRED TO REPOSITION.

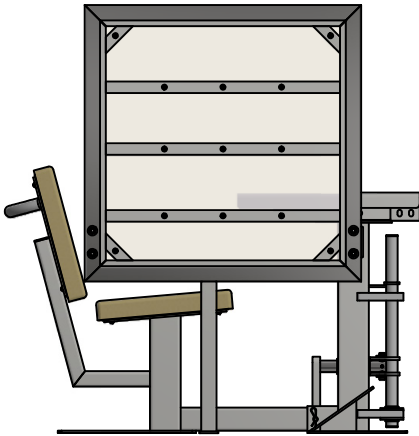
1/4" CLEAR POLYCARBONATE ALLOWS  
CORRECTIONAL STAFF PROXIMITY  
WITH MAXIMUM SITUATIONAL AWARENESS.  
(REPLACEMENT PART 797201.1000)

23.75" WIDE X 22" WORK SURFACE

7/16" DIAMETER FLOOR MOUNTING HOLES ,  
FOR USE WITH 3/8" ANCHOR BOLTS, 8 EACH.

LEFT-SIDE SCREEN MOUNT

RIGHT-SIDE SCREEN MOUNT



LEFT SIDE

CALPIA				
STATE OF CALIFORNIA, PRISON INDUSTRY AUTHORITY 560 EAST NATOMA STREET, FOLSOM, CALIFORNIA 95630				
PRODUCT DESCRIPTION				
CALPIA SECURITY DESKS				
ERPLx DESCRIPTION (30 CHARACTERS MAX)				
CUSTOMER INSTALLATION, OPERATION, AND INFORMATION DRAWING				
ERPLx EXTRA DESCRIPTION (30 CHARACTERS MAX)				
DRAWN BY	797103.2000			
D.SPIVEY				
CHECKED BY				
R.MARIN				
DRAWING SCALE	NOTED			
SHEET SIZE	D			
355	797103.2000			
WEIGHT (lbs)	797103.2000	797103.2000	797103.2000	A
FINISHED GOOD #	ERPLx ITEM #	ENG DRAWING #	REV	SHEET #
2	1	1	1	5

NOTE: THIS DRAWING IS PROPRIETARY INFORMATION OF CALPIA AND IS NOT TO BE DISCLOSED IN PART OR AS A WHOLE WITHOUT PRIOR WRITTEN CONSENT AND PERMISSION OF CALPIA.



WHEELCHAIR ACCESSIBLE DESK: 797103.1000 - OPERATION

REVISION HISTORY		
REV	EWR #	DATE
A	002187	3/10/2020

23.75" WIDE X 22" WORK SURFACE

PUSH FWD

LOCK BAR IS RETRACTED,  
READY FOR OFFENDER ENTRY

OPEN LOCK BAR POSITION  
SCALE .21875

TALLER THAN STANDARD RECEIVER TO  
ACCOMMODATE WHEELCHAIR-BOUND  
OFFENDERS

SELF-RETRACTING PULL PIN.  
12 LOCKING DESK POSITIONS.

CONVENIENT  
REPOSITIONING  
HANDLE

15"  
MINIMUM  
CLEARANCE

31.3"  
TABLE HEIGHT  
SEE NOTE 3

SIDE VIEW

REMOVABLE PIN ALLOWS SEAT  
TO BE DISCONNECTED FROM DESK

17" ADJUSTABLE FORWARD TRAVEL

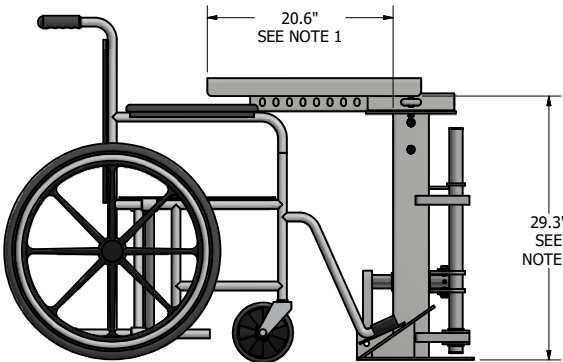
DETACHABLE SEAT CAN BE REMOVED TO ALLOW  
ENTRY OF WHEELCHAIR-SEATED OFFENDER.

1/2" DIAMETER PADLOCKABLE HASP

CLOSED LOCK BAR POSITION  
SCALE .21875

AFTER SEATING, OFFENDER'S LEG RESTRAINT  
PASSES UNDER CLOSED LOCK BAR.  
THIS MAINTAINS A CONTROLLED, SEATED POSITION.  
SEE SHEET 5 FOR RESTRAINT RECOMMENDATIONS.

TEFLON RUB STRIPS ALLOW  
SEAT TO SLIDE ON FLOOR  
WHEN DISCONNECTED



SEAT REMOVED FOR WHEELCHAIR USE

NOTE 1: MEETS CDCR'S 19" MINIMUM REQUIREMENT.  
NOTE 2: MEETS CDCR'S 27" MINIMUM REQUIREMENT.  
NOTE 3: MEETS CDCR'S 28" - 34" TABLE HEIGHT RANGE.

CALPIA					
STATE OF CALIFORNIA, PRISON INDUSTRY AUTHORITY 560 EAST NATOMA STREET, FOLSOM, CALIFORNIA 95630					
PRODUCT DESCRIPTION					
CALPIA SECURITY DESKS					
ERPLx DESCRIPTION (30 CHARACTERS MAX)					
CUSTOMER INSTALLATION, OPERATION, AND INFORMATION DRAWING					
ERPLx EXTRA DESCRIPTION (30 CHARACTERS MAX)					
DRAWN BY	D.SPIVEY				
CHECKED BY	R.MARIN				
DRAWING SCALE	NOTED				
SHEET SIZE	D				
264	797103.1000	FOLSOM	797103.1000	A	SHEET 4 OF 5
WEIGHT (lbs)	FINISHED GOOD #	ERPLx ITEM #	ENG DRAWING #	REV	SHEET #

NOTE: THIS DRAWING IS PROPRIETARY INFORMATION OF CALPIA AND IS NOT TO BE DISCLOSED IN PART OR AS A WHOLE WITHOUT PRIOR WRITTEN CONSENT AND PERMISSION OF CALPIA.

CALPIA Security Desk

REVISION HISTORY		
REV	EWR #	DATE
A	002187	3/10/2020

Offender seating process:

The Offender is secured sitting down on the Security Desk by:

- Swing the lock bar handle to retract the foot lock bar in the open position
- Seat the Offender and place the offender's foot chains over the open lock bar.
- Swing the long lock bar handle to engage the foot lock bar in the closed position (see sheet 2).
- The desktop can be adjusted forward or backwards by pulling a small T-handle located on the right-hand side (when seated) of the desktop.
- Pad lock the lever to the engaged hasp.

Leg/waist restraints:

When securing an offender into any Security Desk it is recommended that both waist/wrist and leg restraints be utilized. Both should be applied tightly as to not be removed. To limit range of movement it is suggested that the leg restraints be no longer than 15". The Standard restraints and padlock utilized by the CDCR are as follows:

- Leg Restraints, Std: Peerless 703C - 15-inch chain. Standard size.
- Leg Restraints, Large: Peerless 705C - 15-inch chain. Oversized.
- Waist Restraints, Std: Peerless 7002C - 54-inch chain with padlock rings.
- Waist Restraints, Lg: Peerless 7002C-OS - 54-inch chain with padlock rings. Oversized handcuffs.
- Padlock: Master Lock #5KA

Anchoring the units:

The base plate mounting hole diameter for the desks is specified at 0.44" dia. (nominal 7/16" dia.). A 3/8" dia. X 2 3/4" long (min.) stainless steel Concrete Anchor stud is suggested. There are different types/grades of concrete floor. Typical hi-grade concrete is 4000 pounds/sq. Inch.

To relocate the Side Screen to the opposite side:

- 1) Unbolt the screen horizontal square tube from the main vertical post of the desk and the floor plate on the concrete floor.
- 2) Unbolt the horizontal square tube from the screen and relocate it to the opposite end of the screen and mount it to the screen mounting holes provided .
- 3) Move the entire screen assembly to the opposite side of where it was mounted previously.
- 4) Loosely Attach the horizontal square tube to the main vertical post of the desk using the same hardware.
- 5) Loosely Secure the floor plate to the cement floor using new expansion inserts.
- 6) Align the screen to be square. Tighten the bolts and torque to 30-35 foot-lbs.

