

METRO CAMPUS

DEPARTMENT OF MILITARY SINGLE BED ASSEMBLY INSTRUCTIONS

ITEM # 657200.C0XX (D.O.M. BARRACK TWIN XL)



GENERAL INSTRUCTIONS

- VERIFY YOUR SHIPMENT CONTAINS ALL THE PREASSEMBLED COMPONENTS AND HARDWARE SHOWN BELOW
- ASSEMBLE THIS PRODUCT BY HAND TIGHTENING ALL HARDWARE LOOSELY WITHOUT TOOLS FIRST, THEN TIGHTEN ALL HARDWARE LAST WHEN ALL COMPONENTS ARE INSTALLED.
- IT IS NOT RECOMMENDED TO ASSEMBLE THIS PRODUCT USING POWER TOOLS.

*THREE PEOPLE FOR ASSEMBLY IS RECOMMENDED. TWO TO POSITION PARTS AND ONE TO INSERT HARDWARE.

TOOLS REQUIRED

- 7/32" ALLEN WRENCH
- 7/16" COMBINATION WRENCH (QTY. 2)

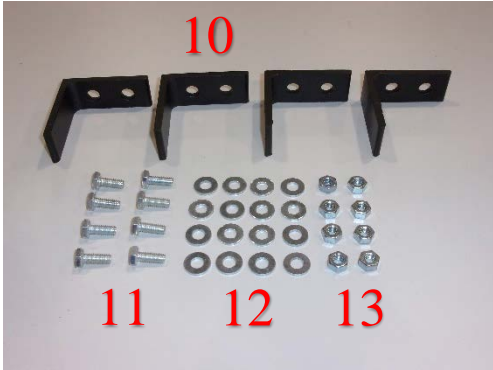
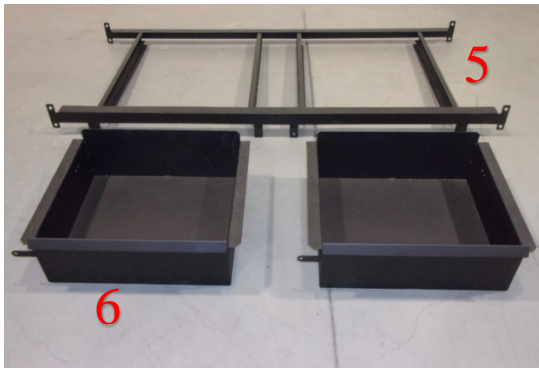
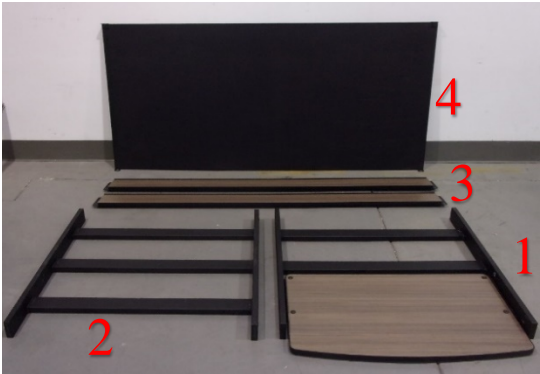


TOOLS RECOMMENDED

- 3/8" DRIVE RACHET
- 7/32" HEX SOCKET BIT
- TORQUE WRENCH

PARTS INCLUDED

ITEM	QTY.	NAME
1	1	PREASSEMBLED HEADBOARD (WITH WOOD)
2	1	PREASSEMBLED FOOTBOARD (WITH WOOD)
3	2	PREASSEMBLED SIDE RAILS (WITH WOOD)
4	1	BED PAN
5	1	DRAWER FRAME
6	2	DRAWERS
7	12	3/8-16 X 1" LONG BUTTON HEAD HEX DRIVE SCREWS
8	12	3/8" LOCK WASHERS
9	12	3/8" X 1" OD FLAT WASHERS
10	4	DRAWER STOPS
11	8	1/4"-20 X 5/8" LONG HEX HEAD BOLTS
12	16	1/4" X 5/8" OD FLAT WASHERS
13	8	1/4"-20 HEX NUTS



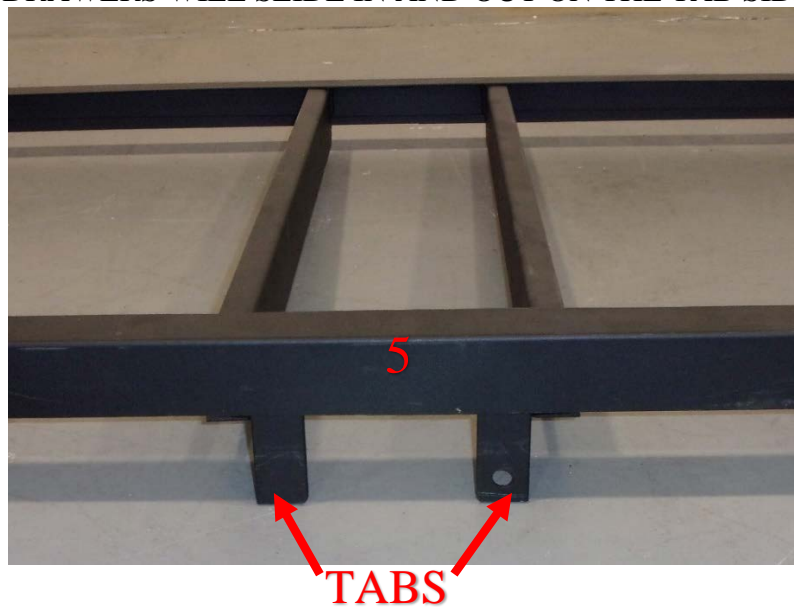
STEP 1

- THIS BED IS A FOUR POSITION ADJUSTABLE BED WITH SLIDE OUT DRAWERS. IT IS NOT RECOMMENDED TO HAVE THE DRAWER FRAME AT THE LOWEST POSITION.
- DETERMINE WHICH SIDE YOU WANT THE DRAWERS TO SLIDE OUT, THEN POSITION THE DRAWER FRAME, (ITEM 5), HEADBOARD, (ITEM 1), AND FOOTBOARD, (ITEM 2). (THE DRAWERS WILL SLIDE OUT ON THE SIDE OF THE DRAWER FRAME THAT HAS THE VERTICAL TABS AS SHOWN IN THE BOTTOM PICTURE)

POSITION DRAWER FRAME, HEADBOARD, AND FOOTBOARD



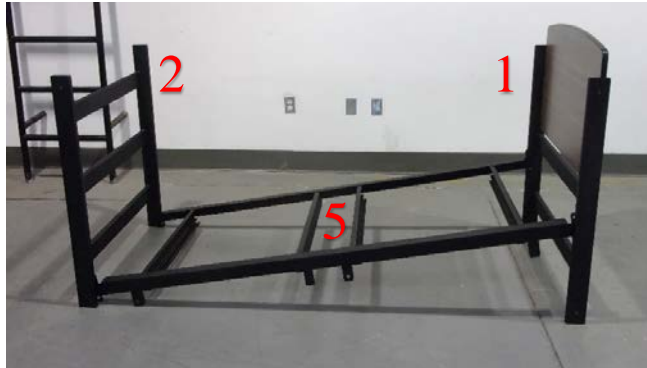
DRAWERS WILL SLIDE IN AND OUT ON THE TAB SIDE



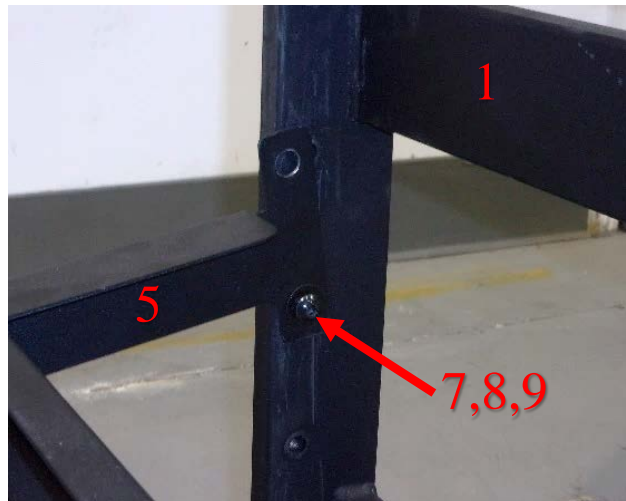
STEP 2

- DETERMINE HOLE LOCATIONS FOR HEIGHT OF DRAWER FRAME.
- INSERT QTY. 2, 3/8" X 1" BOLTS, (ITEM 7), LOCK WASHERS, (ITEM 8), FLAT WASHERS, (ITEM 9), INTO THE BOTTOM HOLES OF THE DRAWER FRAME, INTO THE HEADBOARD. HAVE SOMEONE HOLD THE HEADBOARD SO IT DOESN'T FALL OVER.
- HAND TIGHTEN ONLY.

ATTACH DRAWER FRAME TO HEADBOARD

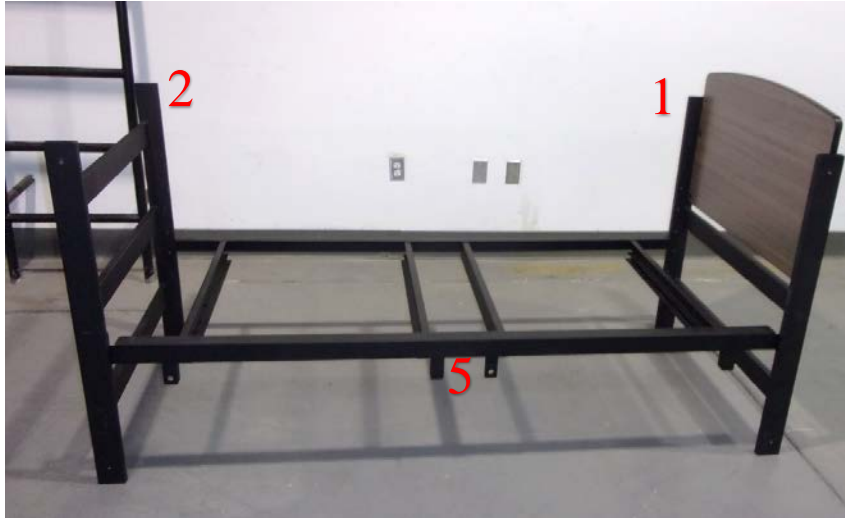


INSERT HARDWARE INTO BOTTOM HOLE OF DRAWER FRAME AND INTO THE HEADBOARD



- WHILE HAVING A PERSON HOLD THE HEADBOARD UPRIGHT, INSERT QTY. 2, 3/8" X 1" BOLTS, (ITEM 7), LOCK WASHERS, (ITEM 8), FLAT WASHERS, (ITEM 9), INTO THE BOTTOM HOLES OF THE DRAWER FRAME, INTO THE FOOTBOARD.
- HAND TIGHTEN ONLY.

ATTACH DRAWER FRAME TO THE FOOTBOARD



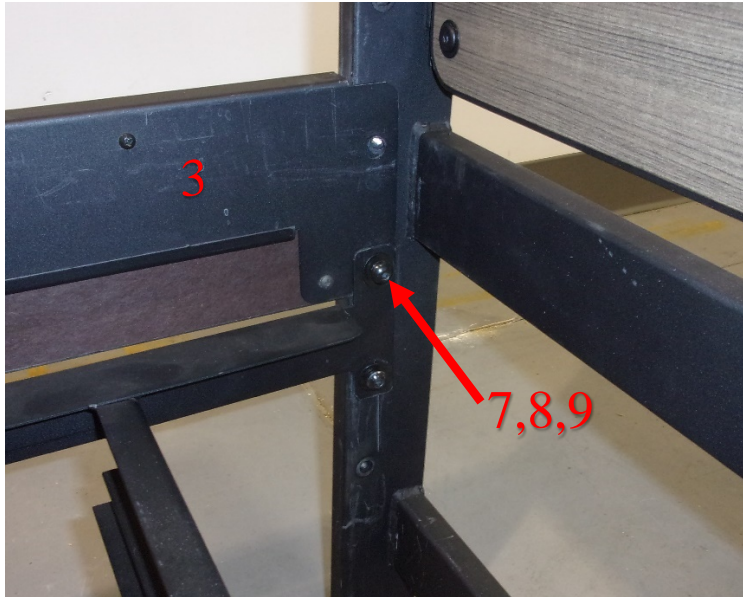
INSERT HARDWARE INTO BOTTOM HOLE OF DRAWER FRAME AND INTO THE FOOTBOARD



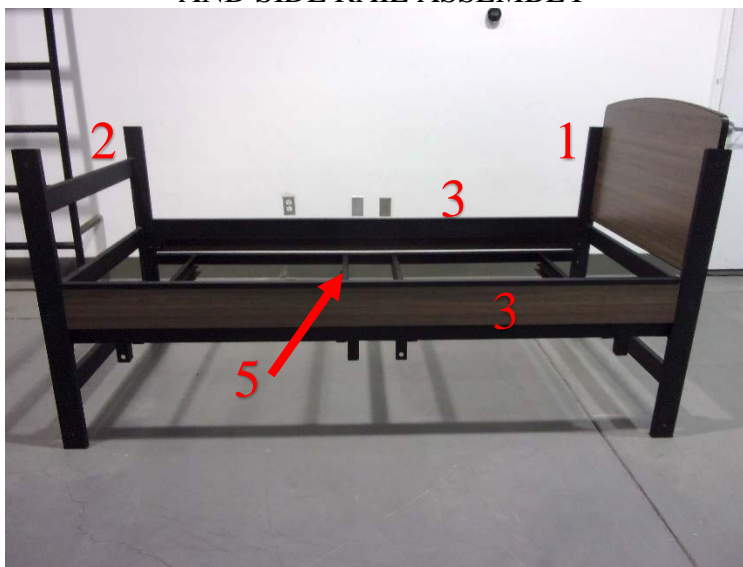
STEP 3

- SLIDE IN THE SIDE RAILS, (ITEM 3), SO THAT THE BOTTOM HOLE OF EACH SIDE RAIL IS BETWEEN THE DRAWER FRAME AND HEADBOARD/FOOTBOARD.
- INSERT QTY. 4, 3/8" X 1" BOLTS, (ITEM 7), LOCK WASHERS, (ITEM 8), AND FLAT WASHERS, (ITEM 9), INTO THE TOP HOLE OF THE DRAWER FRAME, INTO THE BOTTOM HOLE OF THE SIDE RAILS, AND INTO THE HEADBOARD/ FOOTBOARD.
- HAND TIGHTEN ONLY.

PLACE SIDE RAILS AND INSERT HARDWARE



HEADBOARD, FOOTBOARD, DRAWER FRAME, AND SIDE RAIL ASSEMBLY



STEP 4

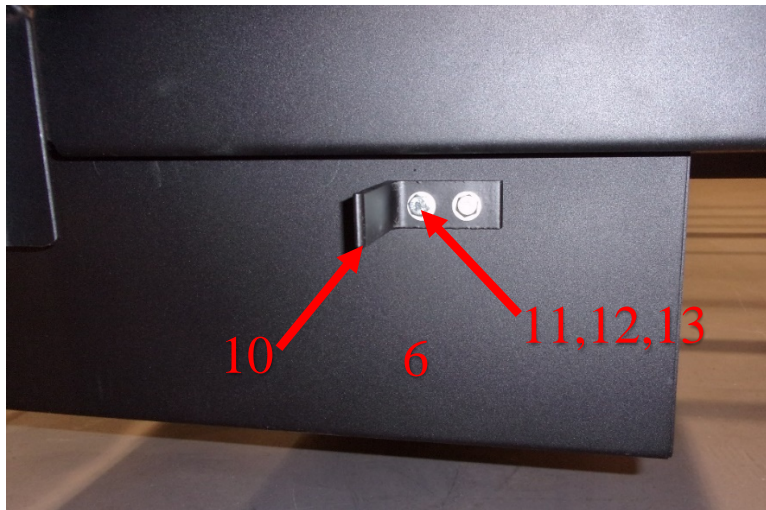
- INSERT QTY. 2, DRAWERS, (ITEM 6), INTO THE DRAWER FRAME, SO THAT THE TABS ON THE FRAME AND THE TABS ON THE DRAWERS ARE ON THE SAME SIDE.
- INSERT QTY. 8, 1/4" X 5/8" BOLTS (ITEM 11), WASHERS, (ITEM 12), HEX NUTS, (ITEM 13), INTO HOLES OF DRAWER STOPS QTY. 4, (ITEM 10), AND INTO THE SIDE OF THE DRAWERS. FULLY TIGHTEN.

INSERT DRAWERS INTO DRAWER FRAME



ATTACH DRAWER STOPS TO DRAWERS WITH HARDWARE

DRAWERS
SLIDE OUT THIS
DIRECTION



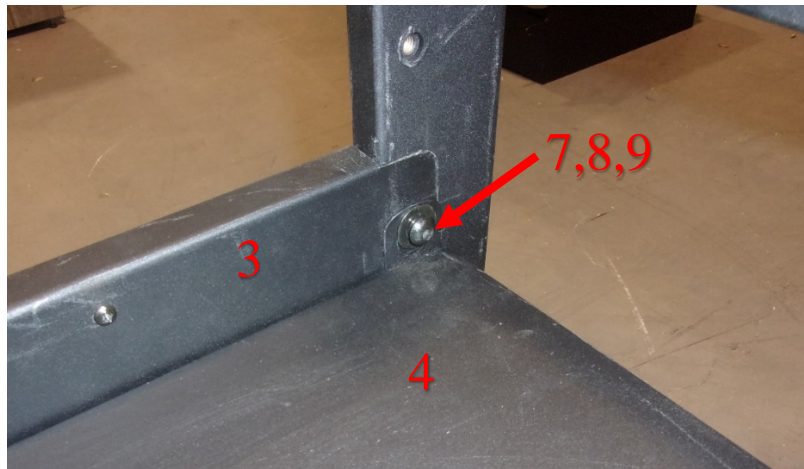
STEP 5

- INSERT THE BED PAN, (ITEM 4), FROM THE END OF THE BED AT THE FOOTBOARD.
- SLIDE THE BED PAN ON THE CHANNEL OF THE SIDE RAIL, UP TO THE HEADBOARD, UNTIL THE END OF THE BED PAN CLEARS AND ALLOWS IT TO FALL INTO PLACE.
- THE BED PAN MOUNTING HOLES SHOULD LINE UP WITH THE TOP HOLES OF THE SIDE RAIL MOUNTING HOLES.
- INSERT QTY. 4, 3/8" X 1" BOLTS, (ITEM 7), LOCK WASHERS, (ITEM 8), AND FLAT WASHERS, (ITEM 9), TO SECURE THE BED PAN IN PLACE AS SHOWN BELOW.
- HAND TIGHTEN ONLY.

INSERT THE BED PAN



SECURE THE BED PAN IN PLACE



STEP 6

- SECURELY TIGHTEN ALL BOLTS, THESE SHOULD BE TIGHTENED TO 25 FT-LBS. WITH OPTIONAL TOOLS RECOMMENDED.
- DO NOT OVER-TIGHTEN, AS IT WILL STRIP THE HARDWARE OR LOOSEN RIVETS.