

METRO CAMPUS

DEPARTMENT OF MILITARY BUNKED BED ASSEMBLY INSTRUCTIONS

ITEM # 657200.C0XX (D.O.M. BARRACK TWIN XL)
AND
ITEM # 657400.1XXX (BUNKING BRACKETS)
AND/OR
ITEM# 657401.10XX (BUNKING BRACKET W/STIRRUP)



GENERAL INSTRUCTIONS

- VERIFY YOUR SHIPMENT CONTAINS ALL THE PREASSEMBLED COMPONENTS AND HARDWARE SHOWN BELOW
- ASSEMBLE THIS PRODUCT BY HAND TIGHTENING ALL HARDWARE LOOSELY WITHOUT TOOLS FIRST, THEN TIGHTEN ALL HARDWARE LAST WHEN ALL COMPONENTS ARE INSTALLED.
- IT IS NOT RECOMMENDED TO ASSEMBLE THIS PRODUCT USING POWER TOOLS.

*THREE PEOPLE FOR ASSEMBLY IS RECOMMENDED. TWO TO POSITION PARTS AND ONE TO INSERT HARDWARE.

TOOLS REQUIRED

- 7/32" ALLEN WRENCH
- 7/16" COMBINATION WRENCH (QTY. 2)

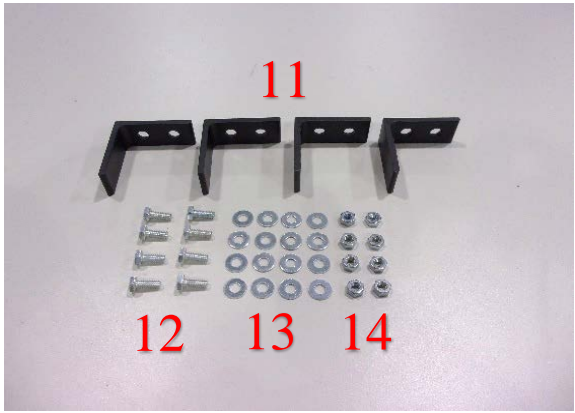
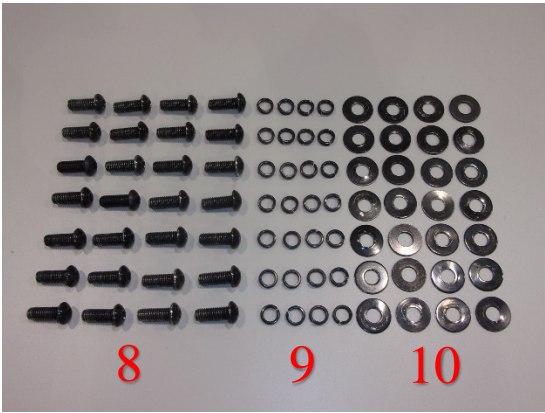
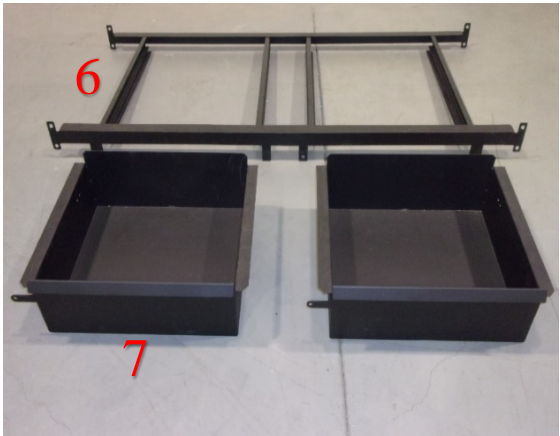
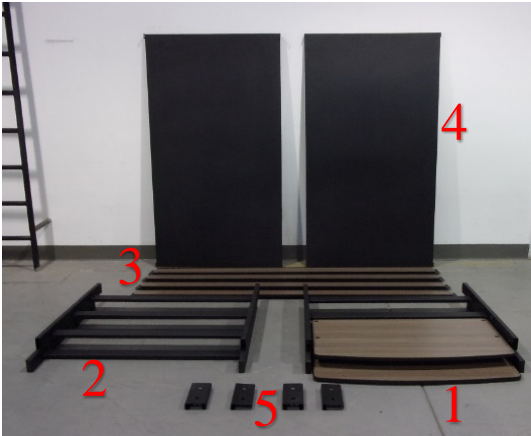


TOOLS RECOMMENDED

- 3/8" DRIVE RACHET
- 7/32" HEX SOCKET BIT
- TORQUE WRENCH

PARTS INCLUDED

ITEM	QTY.	NAME
1	2	PREASSEMBLED HEADBOARD (WITH WOOD)
2	2	PREASSEMBLED FOOTBOARD (WITH WOOD)
3	4	PREASSEMBLED SIDE RAILS (WITH WOOD)
4	2	BED PAN
5	4	BUNKING BRACKET
6	1	DRAWER FRAME
7	2	DRAWERS
8	28	3/8-16 X 1" LONG BUTTON HEAD HEX DRIVE SCREWS
9	28	3/8" LOCK WASHERS
10	28	3/8" X 1" OD FLAT WASHERS
11	4	DRAWER STOPS
12	8	1/4"-20 X 5/8" LONG HEX HEAD BOLTS
13	16	1/4" X 5/8" OD FLAT WASHERS
14	8	1/4"-20 HEX NUTS



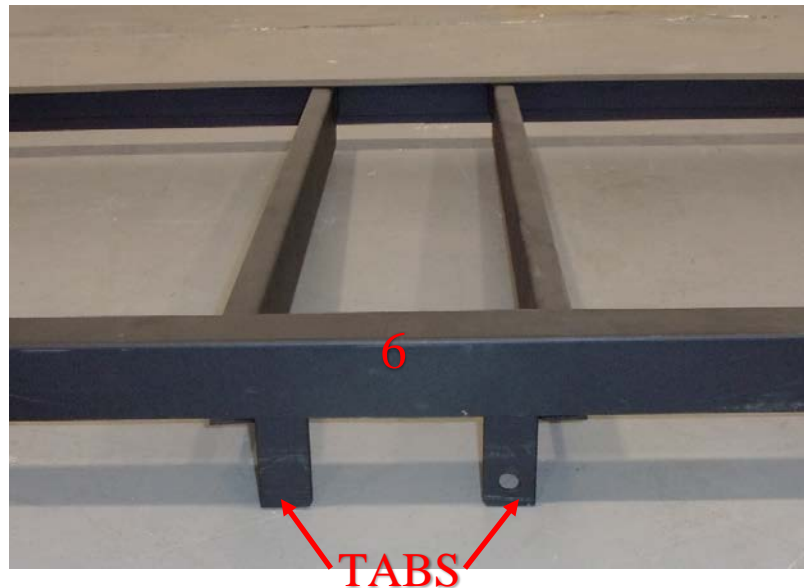
STEP 1

- THIS IS AN ADJUSTABLE BUNKED BED WITH SLIDE OUT DRAWERS. THE BOTTOM IS A FOUR POSITION ADJUSTABLE BED AND THE TOP IS A FIVE POSITION ADJUSTABLE BED. IT IS NOT RECOMMENDED TO HAVE THE DRAWER FRAME AT THE LOWEST POSITION.
- DETERMINE WHICH SIDE YOU WANT THE DRAWERS TO SLIDE OUT, THEN POSITION THE DRAWER FRAME, (ITEM 6), HEADBOARD, (ITEM 1), AND FOOTBOARD, (ITEM 2). (THE DRAWERS WILL SLIDE OUT ON THE SIDE OF THE DRAWER FRAME THAT HAS THE VERTICAL TABS AS SHOWN IN THE BOTTOM PICTURE)

POSITION DRAWER FRAME, HEADBOARD, AND FOOTBOARD



DRAWERS WILL SLIDE IN AND OUT ON THE TAB SIDE



STEP 2

- DETERMINE HOLE LOCATIONS FOR HEIGHT OF DRAWER FRAME.
- INSERT QTY. 2, 3/8" X 1" BOLTS, (ITEM 8), LOCK WASHERS, (ITEM 9), FLAT WASHERS, (ITEM 10), INTO THE BOTTOM HOLES OF THE DRAWER FRAME, (ITEM 6), INTO THE HEADBOARD, (ITEM 1). HAVE SOMEONE HOLD THE HEADBOARD SO IT DOESN'T FALL OVER.
- HAND TIGHTEN ONLY.

ATTACH DRAWER FRAME TO HEADBOARD

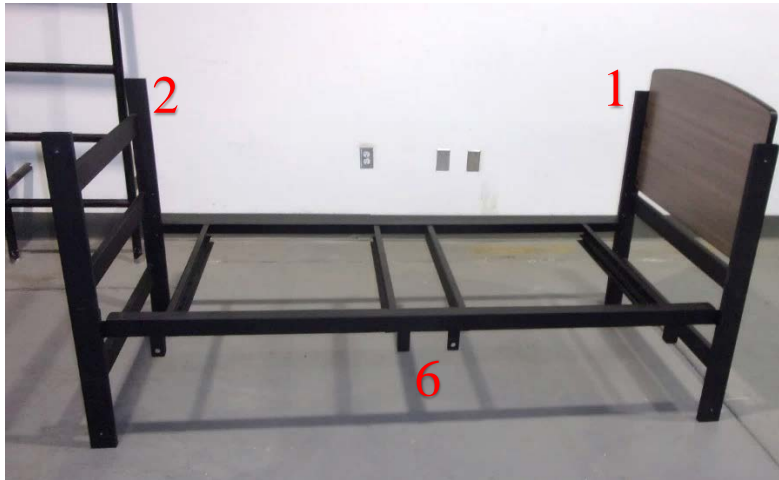


INSERT HARDWARE INTO BOTTOM HOLE OF DRAWER FRAME AND INTO THE HEADBOARD



- WHILE HAVING A PERSON HOLD THE HEADBOARD UPRIGHT, INSERT QTY. 2, 3/8" X 1" BOLTS, (ITEM 8), LOCK WASHERS, (ITEM 9), FLAT WASHERS, (ITEM 10), INTO THE BOTTOM HOLES OF THE DRAWER FRAME, (ITEM 6), INTO THE FOOTBOARD, (ITEM 2).
- HAND TIGHTEN ONLY.

ATTACH DRAWER FRAME INTO FOOTBOARD



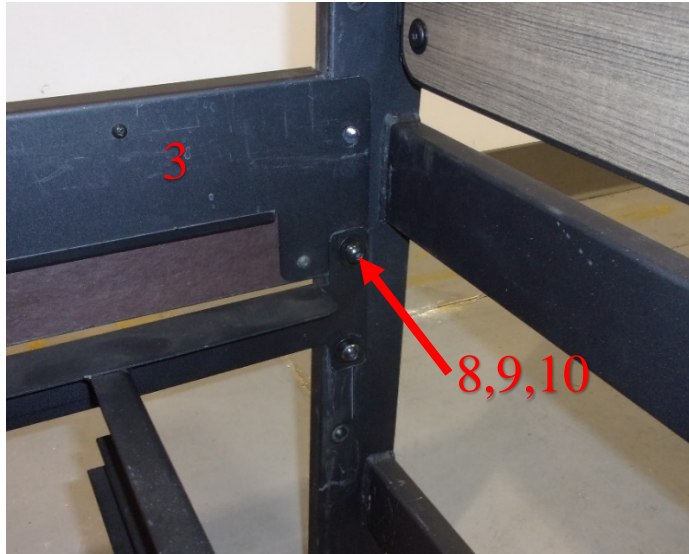
INSERT HARDWARE INTO BOTTOM HOLE OF DRAWER FRAME AND INTO THE FOOTBOARD



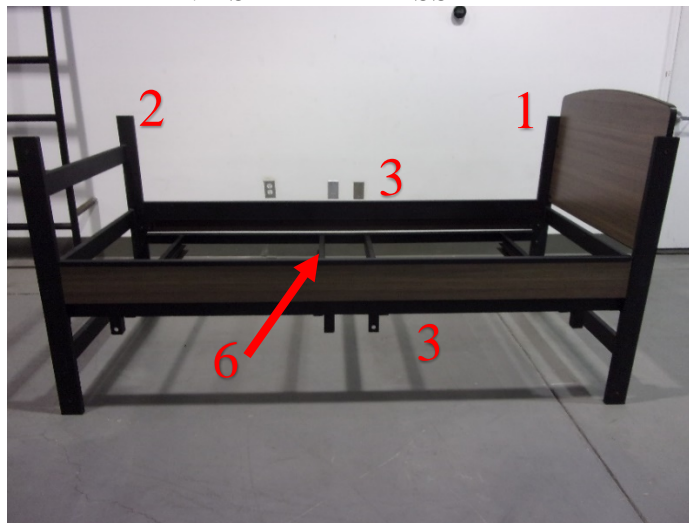
STEP 3

- SLIDE IN THE SIDE RAILS, (ITEM 3), SO THAT THE BOTTOM HOLE OF EACH SIDE RAIL IS BETWEEN THE DRAWER FRAME AND HEADBOARD/FOOTBOARD.
- INSERT QTY. 4, 3/8" X 1" BOLTS, (ITEM 8), LOCK WASHERS, (ITEM 9), AND FLAT WASHERS, (ITEM 10), INTO THE TOP HOLE OF THE DRAWER FRAME, INTO THE BOTTOM HOLE OF THE SIDE RAILS, AND INTO THE HEADBOARD/ FOOTBOARD.
- HAND TIGHTEN ONLY.

PLACE SIDE RAILS AND INSERT HARDWARE



HEADBOARD, FOOTBOARD, DRAWER FRAME, AND SIDE RAIL ASSEMBLY



STEP 4

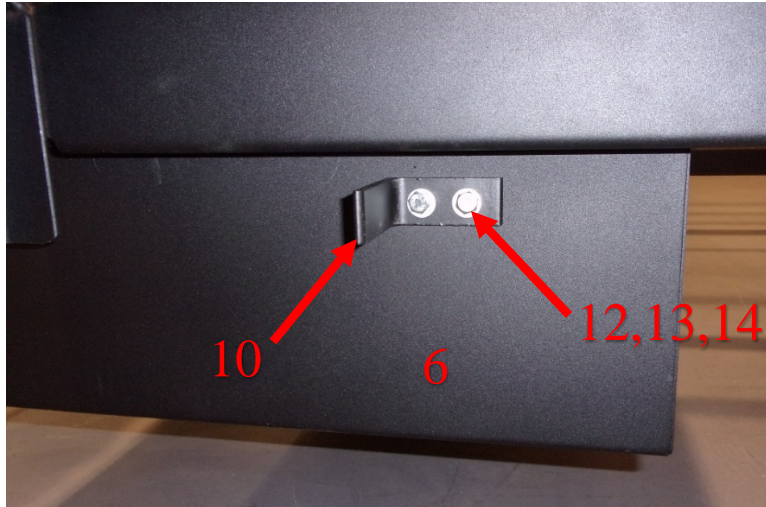
- INSERT QTY. 2, DRAWERS, (ITEM 7), INTO THE DRAWER FRAME, SO THAT THE TABS ON THE FRAME AND THE TABS ON THE DRAWERS ARE ON THE SAME SIDE.
- INSERT QTY. 8, 1/4" X 5/8" BOLTS (ITEM 12), QTY. 16, WASHERS, (ITEM 13), QTY. 8, HEX NUTS, (ITEM 14), INTO HOLES OF DRAWER STOPS QTY. 4, (ITEM 11), AND INTO THE SIDE OF THE DRAWERS. FULLY TIGHTEN

INSERT DRAWERS INTO DRAWER FRAME



ATTACH DRAWER STOPS TO DRAWERS WITH HARDWARE

DRAWERS
SLIDE OUT THIS
DIRECTION



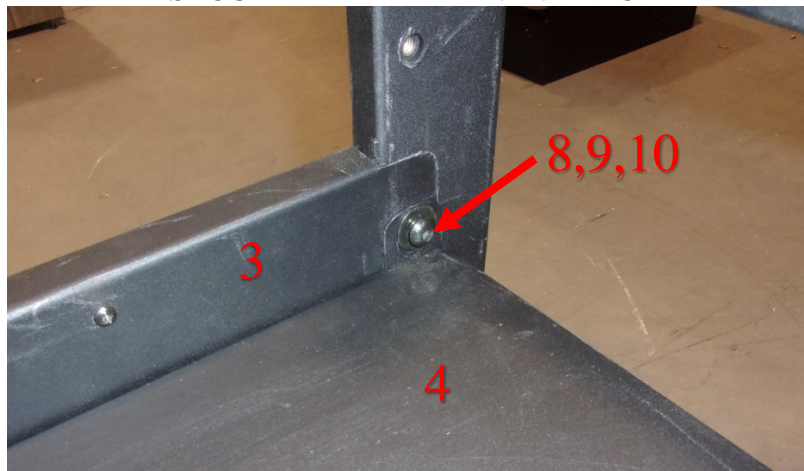
STEP 5

- INSERT THE BED PAN, (ITEM 4), FROM THE END OF THE BED AT THE FOOTBOARD.
- SLIDE THE BED PAN ON THE CHANNEL OF THE SIDE RAIL, UP TO THE HEADBOARD, UNTIL THE END OF THE BED PAN CLEARS AND ALLOWS IT TO FALL INTO PLACE.
- THE BED PAN MOUNTING HOLES SHOULD LINE UP WITH THE TOP HOLES OF THE SIDE RAIL MOUNTING HOLES.
- INSERT QTY. 4, 3/8" X 1" BOLTS, (ITEM 8), LOCK WASHERS, (ITEM 9), AND FLAT WASHERS, (ITEM 10), TO SECURE THE BED PAN IN PLACE AS SHOWN BELOW.
- HAND TIGHTEN ONLY.

INSERT THE BED PAN



SECURE THE BED PAN IN PLACE



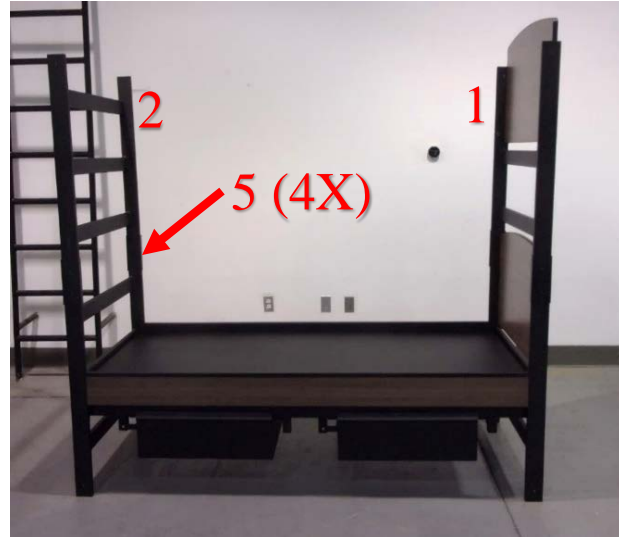
STEP 6

- REMOVE THE PLASTIC CAPS FROM THE TOP ENDS OF THE POSTS OF THE BOTTOM HEADBOARD, (ITEM 1), AND THE BOTTOM FOOTBOARD, (ITEM 2).
- ADD THE QTY. 4, BUNKING BRACKETS, (ITEM 5), TO THE POSTS.
- THEN REMOVE THE PLASTIC CAPS FROM THE BOTTOM ENDS OF THE POSTS OF THE UPPER HEADBOARD AND UPPER FOOTBOARD.
- THEN STACK THE UPPER HEADBOARD AND FOOTBOARD ON THE TOP OF BRACKETS.
- INSERT THE QTY. 8, 3/8" X 1" BOLTS, (ITEM 8), LOCK WASHERS, (ITEM 9), AND FLAT WASHERS, (ITEM 10), TO SECURE THESE COMPONENTS IN PLACE.
- HAND TIGHTEN ONLY.
- THERE IS AN OPTIONAL BUNKING BRACKET WITH STIRRUP SHOWN AT THE BOTTOM. THEY COME TWO PER SET AND ARE INSTALLED BY CUSTOMERS PREFERENCE. IT IS RECOMMENDED THAT THE STIRRUPS BE INSTALLED ON THE SAME SIDE AS THE DRAWERS.

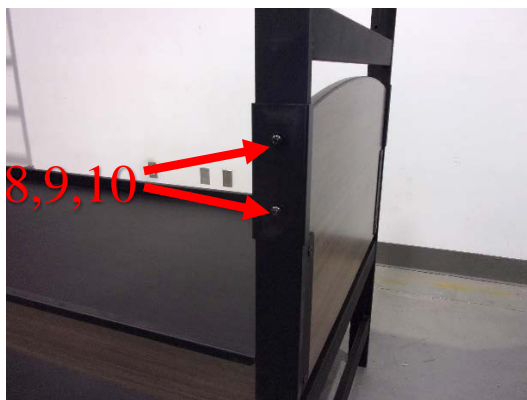
PLACE BUNKING BRACKETS



STACK HEADBOARD AND FOOTBOARD



INSERT HARDWARE



BUNKING BRACKET WITH STIRRUP (OPTIONAL)



STEP 7

- EACH BED IS A FIVE POSITION ADJUSTABLE BED, USING 2 HOLES PER RAIL.
- DETERMINE HOLE LOCATIONS FOR HEIGHT OF UPPER SIDE RAILS, (ITEM 3), THE BED PAN HEIGHT WILL BE APPROXIMATELY 2-3/8" FROM THE TOP OF THE RAIL.
- INSERT QTY. 4, 3/8" X 1" BOLTS, (ITEM 8), LOCK WASHERS, (ITEM 9), AND FLAT WASHERS, (ITEM 10), INTO THE BOTTOM HOLES ONLY OF THE SIDE RAILS, (ITEM 3), INTO TO THE HEADBOARD, (ITEM 1), AND FOOTBOARD, (ITEM 2).
- HAND TIGHTEN ONLY.

INSERT HARDWARE INTO UPPER SIDE RAIL
AND UPPER HEADBOARD/FOOTBOARD



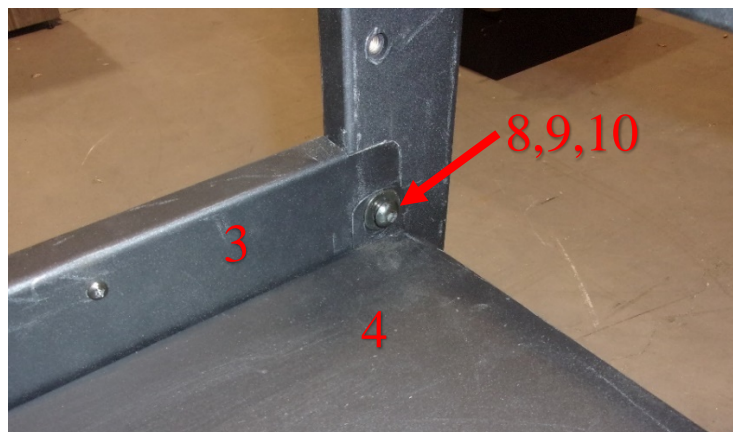
UPPER HEADBOARD, UPPER FOOTBOARD,
AND UPPER SIDE RAIL ASSEMBLY



STEP 8

- INSERT THE UPPER BED PAN, (ITEM 4), FROM THE END OF THE BED AT THE FOOTBOARD.
- SLIDE THE BED PAN ON THE CHANNEL OF THE SIDE RAIL, UP TO THE HEADBOARD, UNTIL THE END OF THE BED PAN CLEARS AND ALLOWS IT TO FALL INTO PLACE.
- THE BED PAN MOUNTING HOLES SHOULD LINE UP WITH THE TOP HOLES OF THE SIDE RAIL MOUNTING HOLES.
- INSERT QTY. 4, 3/8" X 1" BOLTS, (ITEM 8), LOCK WASHERS, (ITEM 9), AND FLAT WASHERS, (ITEM 10), TO SECURE THE BED PAN IN PLACE AS SHOWN BELOW.
- HAND TIGHTEN ONLY.

INSERT UPPER BED PAN



STEP 9

- SECURELY TIGHTEN ALL BOLTS, THESE SHOULD BE TIGHTENED TO 25 FT-LBS. WITH OPTIONAL TOOLS RECOMMENDED.
- DO NOT OVER-TIGHTEN, AS IT WILL STRIP THE HARDWARE OR LOOSEN RIVETS.