

METRO CAMPUS

BUNKED BED ASSEMBLY INSTRUCTIONS

ITEM # 657204.1XXX (BARRACK TWIN XL) QTY. 2
AND

ITEM # 657400.1XXX (BUNKING BRACKETS)

OR

ITEM # 657204.2XXX (BARRACK TWIN XXL) QTY. 2
AND

ITEM # 657400.1XXX (BUNKING BRACKETS)



GENERAL INSTRUCTIONS

- VERIFY YOUR SHIPMENT CONTAINS ALL THE PREASSEMBLED COMPONENTS AND HARDWARE SHOWN BELOW
- ASSEMBLE THIS PRODUCT BY HAND TIGHTENING ALL HARDWARE LOOSELY WITHOUT TOOLS FIRST, THEN TIGHTEN ALL HARDWARE LAST WHEN ALL COMPONENTS ARE INSTALLED.
- IT IS NOT RECOMMENDED TO ASSEMBLE THIS PRODUCT USING POWER TOOLS.

*TWO PEOPLE FOR ASSEMBLY IS RECOMMENDED

TOOLS REQUIRED

- ALLEN WRENCH 7/32"

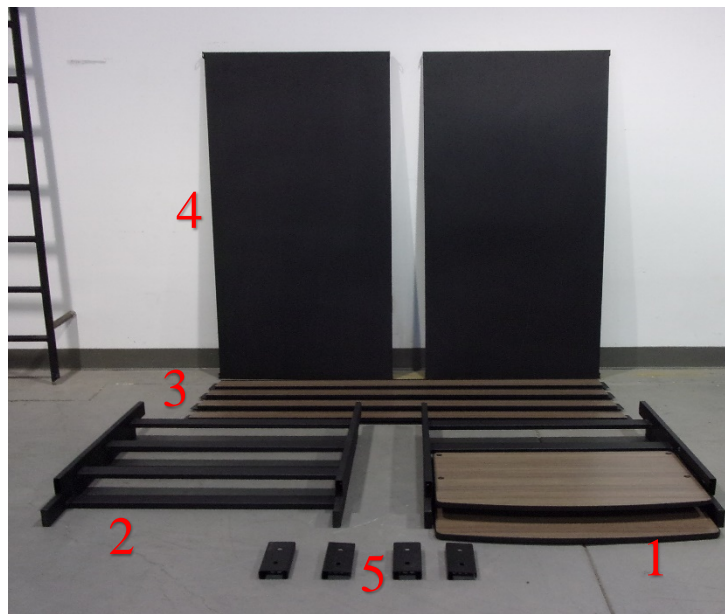


TOOLS RECOMMENDED

- 3/8" DRIVE RACHET
- 7/32" HEX SOCKET BIT
- TORQUE WRENCH

PARTS INCLUDED

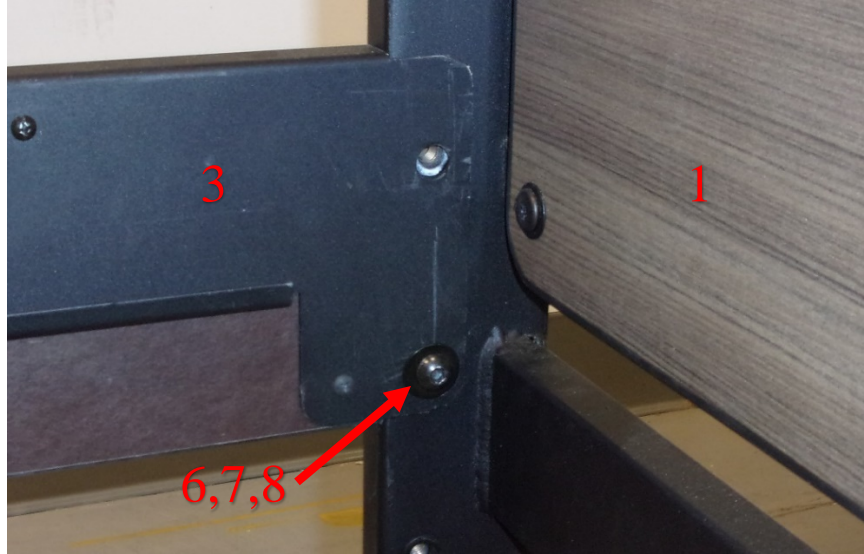
ITEM	QTY.	NAME
1	2	PREASSEMBLED HEADBOARD (WITH WOOD)
2	2	PREASSEMBLED FOOTBOARD (WITH WOOD)
3	4	PREASSEMBLED SIDE RAILS (WITH WOOD)
4	2	BED PAN
5	4	BUNKING BRACKET
6	24	3/8-16 X 1" LONG BUTTON HEAD HEX DRIVE SCREWS
7	24	3/8" LOCK WASHERS
8	24	3/8" X 1" OD FLAT WASHERS



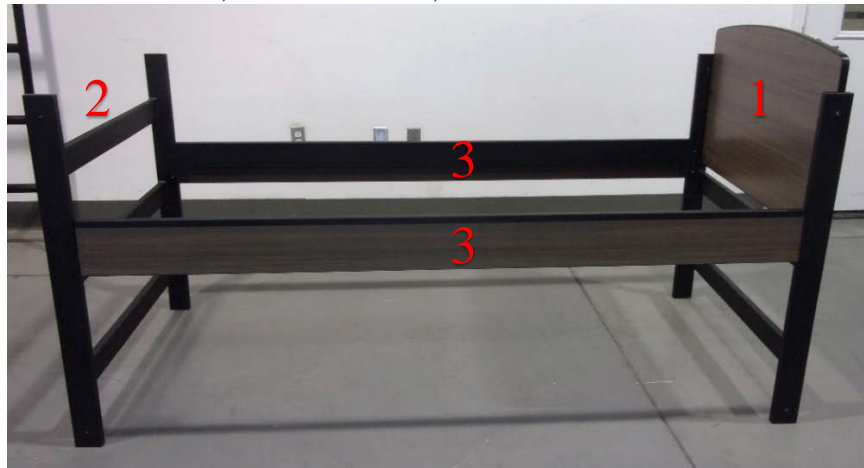
STEP 1

- EACH BED IS A FIVE POSTION ADJUSTABLE BED, USING 2 HOLES PER RAIL.
- DETERMINE HOLE LOCATIONS FOR HEIGHT OF SIDE RAILS, THE BED PAN HEIGHT WILL BE APPROXIMATELY 2-3/8" FROM THE TOP OF THE SIDE RAIL.
- INSERT QTY. 4, 3/8" X 1" BOLTS, (ITEM 6), LOCK WASHERS, (ITEM 7), AND FLAT WASHERS, (ITEM 8), INTO THE BOTTOM HOLES ONLY OF THE SIDE RAILS, (ITEM 3), INTO TO THE HEADBOARD, (ITEM 1), AND FOOTBOARD, (ITEM 2).
- HAND TIGHTEN ONLY.

INSERTING HARDWARE INTO SIDE RAIL AND HEADBOARD



HEADBOARD, FOOTBOARD, AND SIDE RAIL ASSEMBLY



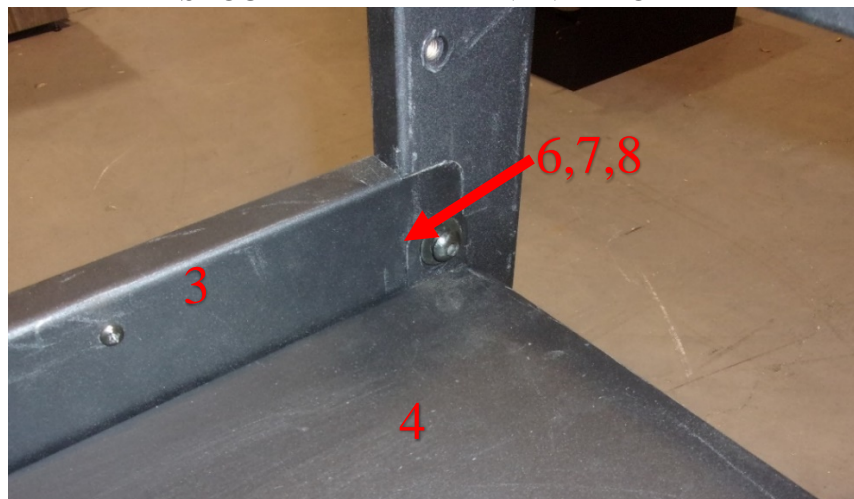
STEP 2

- INSERT THE BED PAN, (ITEM 4), FROM THE END OF THE BED AT THE FOOTBOARD.
- SLIDE THE BED PAN ON THE CHANNEL OF THE SIDE RAIL, UP TO THE HEADBOARD, UNTIL THE END OF THE BED PAN CLEARS AND ALLOWS IT TO FALL INTO PLACE.
- THE BED PAN MOUNTING HOLES SHOULD LINE UP WITH THE TOP HOLES OF THE SIDE RAIL MOUNTING HOLES.
- INSERT QTY. 4, 3/8" X 1" BOLTS, (ITEM 6), LOCK WASHERS, (ITEM 7), AND FLAT WASHERS, (ITEM 8), TO SECURE THE BED PAN IN PLACE AS SHOWN BELOW.
- HAND TIGHTEN ONLY.

INSERT THE BED PAN



SECURE THE BED PAN IN PLACE



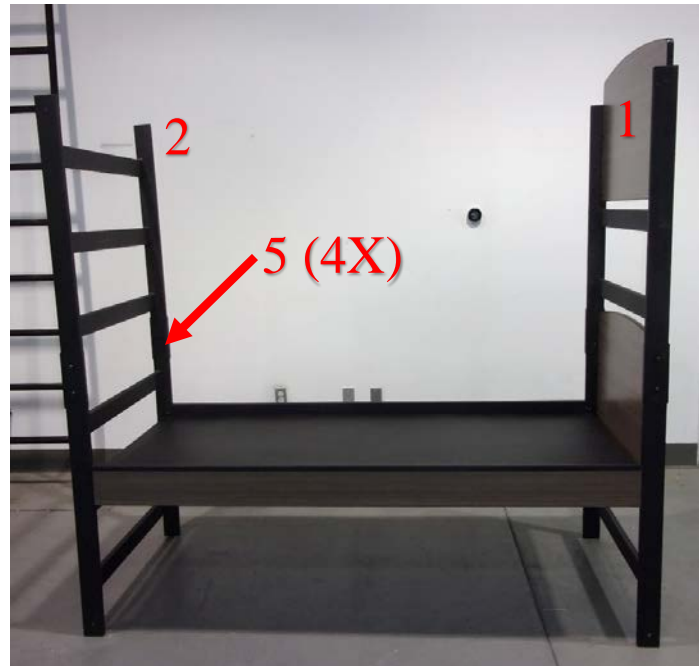
STEP 3

- REMOVE THE PLASTIC CAPS FROM THE TOP ENDS OF THE POSTS OF THE BOTTOM HEADBOARD, (ITEM 1), AND THE BOTTOM FOOTBOARD, (ITEM 2).
- ADD THE QTY. 4, BUNKING BRACKETS, (ITEM 5), TO THE POSTS.
- THEN REMOVE THE PLASTIC CAPS FROM THE BOTTOM ENDS OF THE POSTS OF THE UPPER HEADBOARD AND UPPER FOOTBOARD.
- THEN STACK THE UPPER HEADBOARD AND FOOTBOARD ON THE TOP OF BRACKETS.
- INSERT THE QTY. 8, 3/8" X 1" BOLTS, (ITEM 6), LOCK WASHERS, (ITEM 7), AND FLAT WASHERS, (ITEM 8), TO SECURE THESE COMPONENTS IN PLACE.
- HAND TIGHTEN ONLY.

PLACE BUNKING BRACKETS



STACK HEADBOARD AND FOOTBOARD



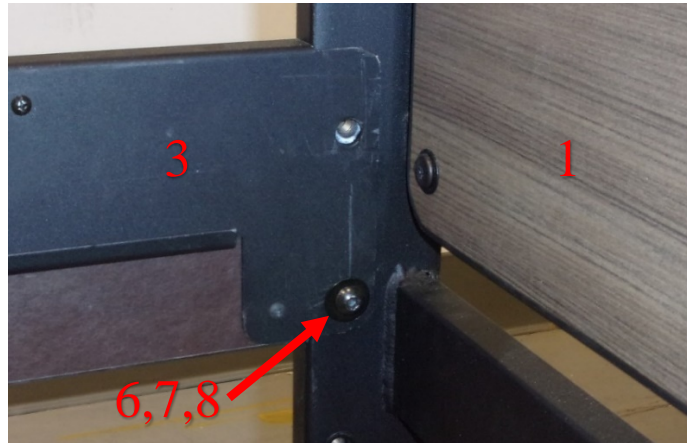
INSERT HARDWARE



STEP 4

- EACH BED IS A FIVE POSITION ADJUSTABLE BED, USING 2 HOLES PER RAIL.
- DETERMINE HOLE LOCATIONS FOR HEIGHT OF UPPER SIDE RAILS, THE BED PAN HEIGHT WILL BE APPROXIMATELY 2-3/8" FROM THE TOP OF THE RAIL.
- INSERT QTY. 4, 3/8" X 1" BOLTS, (ITEM 6), LOCK WASHERS, (ITEM 7), AND FLAT WASHERS, (ITEM 8), INTO THE BOTTOM HOLES ONLY OF THE SIDE RAILS, (ITEM 3), INTO TO THE HEADBOARD, (ITEM 1), AND FOOTBOARD, (ITEM 2).
- HAND TIGHTEN ONLY.

INSERT HARDWARE INTO UPPER SIDE RAIL
AND INTO UPPER HEADBOARD/FOOTBOARD



UPPER HEADBOARD, UPPER FOOTBOARD,
AND UPPER SIDE RAIL ASSEMBLY



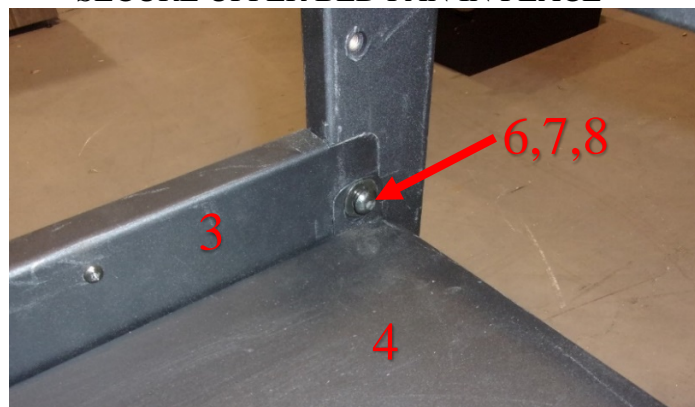
STEP 5

- INSERT THE UPPER BED PAN, (ITEM 4), FROM THE END OF THE BED AT THE FOOTBOARD.
- SLIDE THE BED PAN ON THE CHANNEL OF THE SIDE RAIL, UP TO THE HEADBOARD, UNTIL THE END OF THE BED PAN CLEARS AND ALLOWS IT TO FALL INTO PLACE.
- THE BED PAN MOUNTING HOLES SHOULD LINE UP WITH THE TOP HOLES OF THE SIDE RAIL MOUNTING HOLES.
- INSERT QTY. 4, 3/8" X 1" BOLTS, (ITEM 6), LOCK WASHERS, (ITEM 7), AND FLAT WASHERS, (ITEM 8), TO SECURE THE BED PAN IN PLACE AS SHOWN BELOW.
- HAND TIGHTEN ONLY.

INSERT UPPER BED PAN



SECURE UPPER BED PAN IN PLACE



STEP 6

- SECURELY TIGHTEN ALL BOLTS, THESE SHOULD BE TIGHTENED TO 25 FT-LBS. WITH OPTIONAL TOOLS RECOMMENDED.
- DO NOT OVER-TIGHTEN, AS IT WILL STRIP THE HARDWARE OR LOOSEN RIVETS.