

SEATING FABRIC OPTIONS



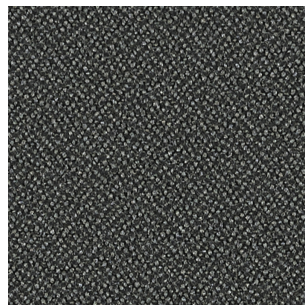
Pictured left to right: Weston Chair (#739800) with Durango Coated Upholstery Chili, Elevate Table (#713511), Weston Chair with Foundation 10 Solid Pattern Flame

MAYER FABRICS

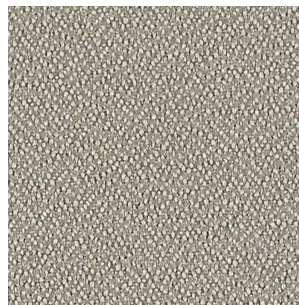
FOUNDATION 10 SOLID PATTERN



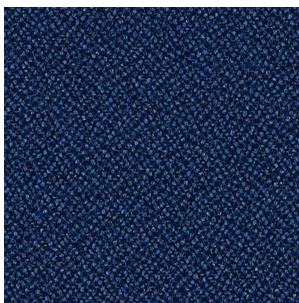
Ebony



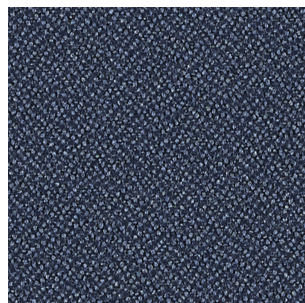
Graphite



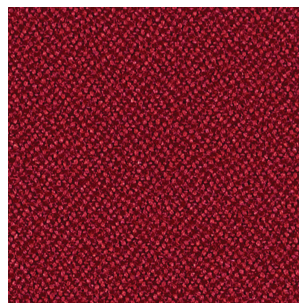
Mocha



Sapphire



Blue Mist



Flame

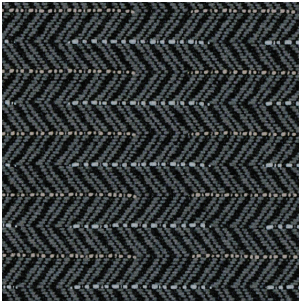


EXAMPLE

*Atlas Chair (#681200)
Ebony Fabric*

MAYER FABRICS

JIVE PATTERN



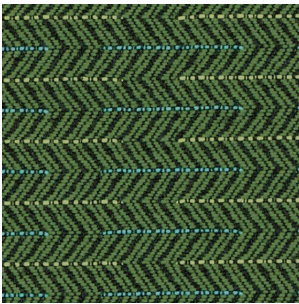
Smoke



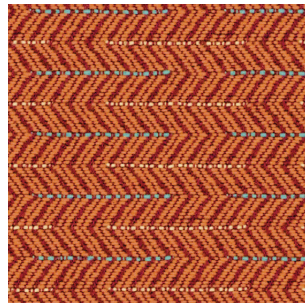
Pewter



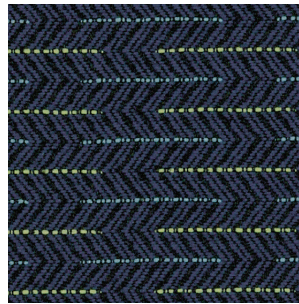
Stone



Emerald



Mango



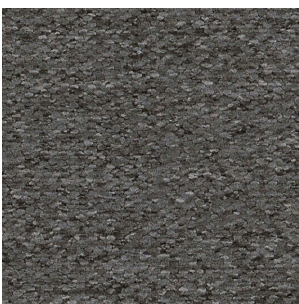
Midnight



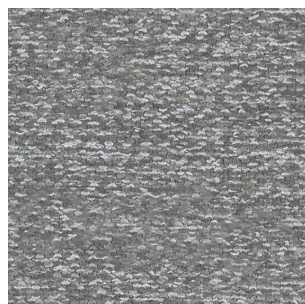
EXAMPLE
Pacifica Chair (#720300)
Mango Fabric

MOMENTUM TEXTILES

NESTLE PATTERN



Pepper



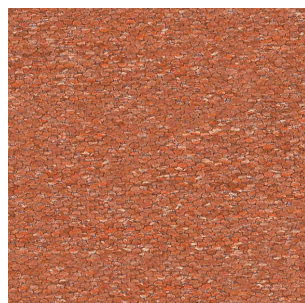
Nickel



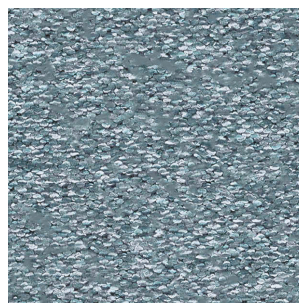
Mineral



Grove



Mesa



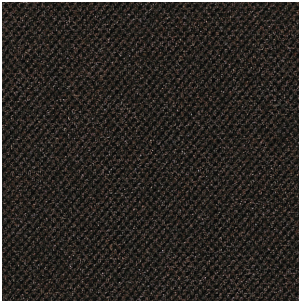
Cascade



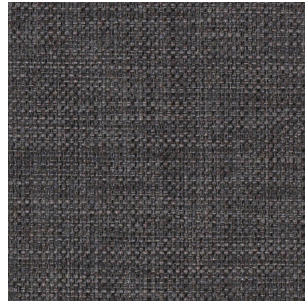
EXAMPLE
Stanford II Chair (#740600)
Grove Fabric

MOMENTUM TEXTILES

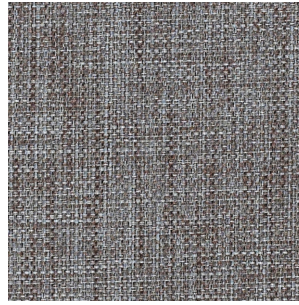
CRYPTON COVER CLOTH



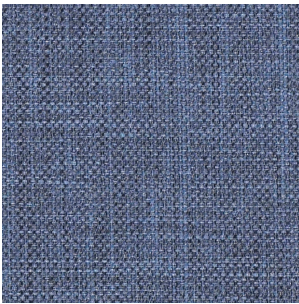
Jet



Graphite



Vesper



Delft



Taupe

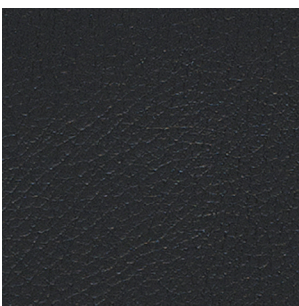


EXAMPLE

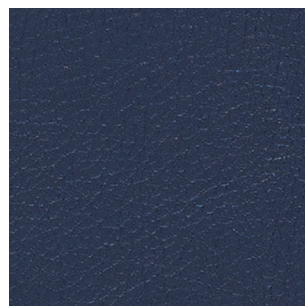
*Strata Chair (#726101)
Taupe Crypton*

MAYER FABRICS

DURANGO COATED UPHOLSTERY



Black



Sapphire



Chili



EXAMPLE

*Weston Chair (#739800)
Sapphire Vinyl*

NOTE: Colors may vary, please contact your sales representative
or call 916.323.2419 to order physical fabric swatches. Visit catalog.calpia.ca.gov

FABRIC SPECIFICATIONS

Specifications	Mayer Fabrics Foundation 10 Solids	Mayer Fabrics Jive Pattern	Momentum Textiles Nestle Pattern	Momentum Textiles Crypton Cover Cloth	Mayer Fabrics Durango Coated Upholstery
Content	100% Recycled Polyester (65% Pre-/35% Post-Consumer)	100% Polyester	67% Polyester, 33% Post Consumer Recycled Polyester	56% Repreve® Post Consumer Recycled Polyester, 44% Polyester	78% Vinyl - Phthalate Free face, 22% Polyester backing
Backing	None	Acrylic	Acrylic	None	100% Polyester
Finish	Stain Repellent	Stain Repellent - PFOA & PFOS Free	None	Crypton Green®**	Soil & Stain Resistant Top Coat with Ink Resistant Technology
Durability* (double rubs)	Exceeds 1,000,000 DR	Exceeds 82,000 DR	200,000 DR	200,000 DR	Exceeds 1,000,000 DR
Colorfastness	Dry: Class 4 min Wet: Class 4 min Light: 40 hours	Dry: Class 4 min Wet: Class 4 min Light: 40 hours	A5 - AATCC 16 opt 3, Class 5	A4 - AATCC 16 opt 3, Class 4	Dry: Class 4 min Wet: Class 4 min Light: 650 hours
Flame Resistance	Passes Cal TB 117-2013; NFPA 260/UFAC Class 1; AB 2998 Compliant; ASTM E84 Class 1 or A (Unadhered)	Passes Cal TB 117-2013; NFPA 260/UFAC Class 1; AB 2998 Compliant	Passes CA Bulletin 117 2013; UFAC Class 1; NFPA 260 Class 1; ASTM E84	Passes CA Bulletin 117 2013; UFAC Class 1; NFPA 260 Class 1	Passes Cal TB 117-2013; NFPA 260/UFAC Class 1; AB 2998 Compliant; BIFMA
Cleaning Codes	WS: Water/Solvent Cleaner	S: Solvent Cleaner	W: Water Based Foam or Cleaner	W: Water Based Foam or Cleaner, BC: Bleach Cleanable (10:1)	WS: Water/Solvent Cleaner, CFC: Coated Fabrics Cleaning, BC: Bleach Cleanable
Environmental & Sustainability	GREENGUARD Gold Certified, No FR additives, No Antimicrobial/ No Antibacterial additives, PFAS Free	GREENGUARD Gold Certified, No FR additives, No Antimicrobial/ No Antibacterial additives, PFAS Free	GREENGUARD Certified, NSF/ANSI 336 Compliant	GREENGUARD Gold Certified, NSF 336 Compliant	GREENGUARD Gold Certified, No FR additives, No Antimicrobial/ No Antibacterial additives, PFAS Free

*Abrasion test results exceeding ACT Performance Guidelines are not an indicator of product lifespan. Multiple factors affect fabric durability and appearance retention

**Crypton® is moisture, stain, odor, fungus, mildew, bacteria resistant. Crypton®'s moisture barrier is integrated into the fabric, ensuring permanent protection. Crypton® is the first and only fabric approved by the EPA and proven to be able to be disinfected.



California Prison Industry Authority
560 East Natoma Street Folsom, CA 95630-2200
916.323.2419 • calpia.ca.gov

